

## Handling System for Rack Type Trays Cord Conveyor Curve 45° with Legs

ITEM # \_\_\_\_\_

MODEL # \_\_\_\_\_

NAME # \_\_\_\_\_

SIS # \_\_\_\_\_

AIA # \_\_\_\_\_

**865129 (HSCCT45C)**Cord conveyor for trays, 45°  
curve unit with legs

### Short Form Specification

**Item No.** \_\_\_\_\_

Constructed in 304 AISI stainless steel. Two cords in 15mm reinforced polyurethane. Square 40x40mm tubular legs on height-adjustable feet. Designed for trays up to 375x530mm.

### Main Features

- Range allows a large number of conveyor combinations.
- Wall mounted on request.
- Available as optional accessory a remote easy-to reach emergency-stop buttons fitted where required.
- Anti tray-jamming system.
- Other angles available on request.
- No stacking trays in curves increase the speed of the outside cord.

### Construction

- For trays up to 375x530mm.
- All surfaces smooth with polished finish.
- Constructed in AISI 304 1,5mm stainless steel.
- Stainless steel square 40x40mm tubular legs.
- 15mm reinforced polyurethane cord, for smooth and easy running.
- Free-standing construction delivered with 40x40mm legs.
- Stainless steel plain conveyor base for easy cleaning.

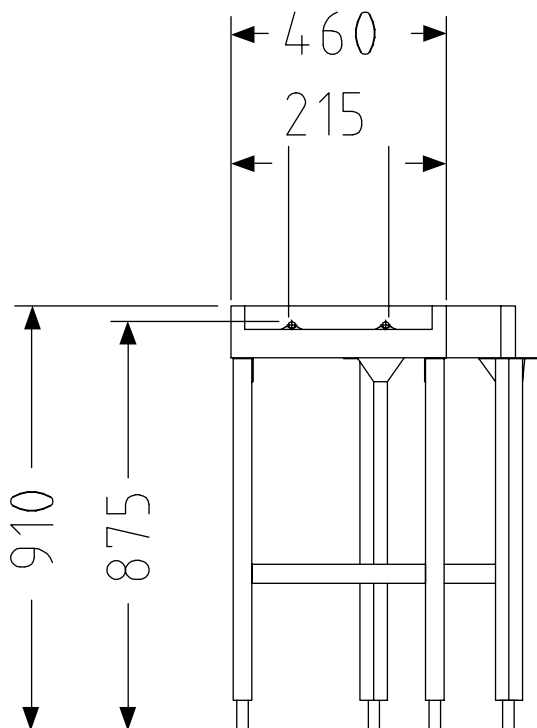
### Optional Accessories

- Emergency switch for cord conveyor PNC 865141 ☐
- Kit for cord welding PNC 865143 ☐

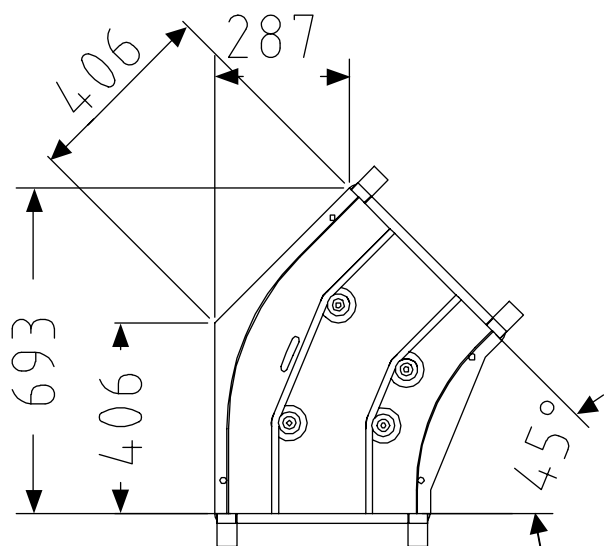
APPROVAL: \_\_\_\_\_

# Handling System for Rack Type Trays Cord Conveyor Curve 45° with Legs

**Front**



**Top**



## Key Information:

External dimensions, Width:

865129 (HSCCT45C) 693 mm

External dimensions, Depth:

612 mm

External dimensions, Height:

910 mm

Net weight:

17 kg

Basin material:

Stainless Steel AISI 304 - EN  
1.4301